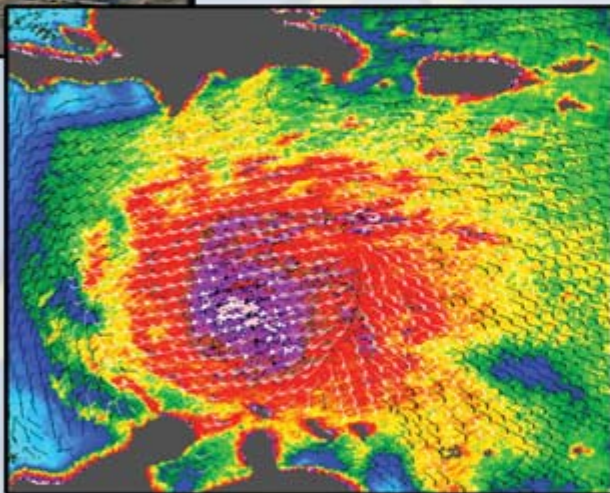


EMMA

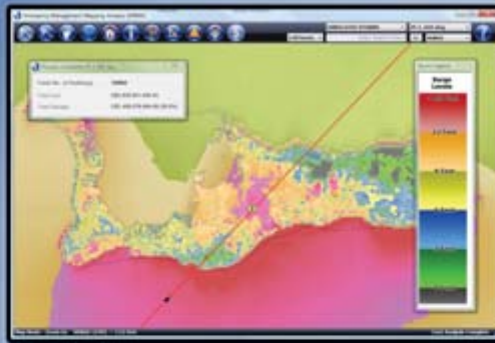
*Emergency Mapping Management
& Analysis*

“ENABLING DISASTER RESILIENT COMMUNITIES”



CAYMAN LAND INFO

KINETIC
ANALYSIS
CORPORATION



HURRICANE MODELING, PREPARATION AND RESPONSE

The ability to assess the likely impact of a hurricane in advance of the event is vital to efficient disaster management and preparedness. Emergency managers require accurate damage assessment tools which can be incorporated within a standard GIS framework and utilised using a simple and intuitive interface.

To meet this demand, Cayman Land Info has created EMMA – Emergency Mapping Management and Analysis. EMMA incorporates the state-of-the-art TAOST™ storm modeling system from Kinetic Analysis Corporation creating a user-friendly, real-time decision support system. This tool enables the display of relevant GIS data such as parcels, buildings, roads, critical infrastructure, and aerial photography. TAOST™ outputs can be projected on top of this GIS base to help decision makers to quickly visualize the worst hit areas, and to generate effective and proactive solutions. Within half an hour of the latest NHC advisory, and for the entire duration of any active storm, TAOST™ generates real-time predictions of wind intensities, storm surge, wave height, cumulative rainfall, and expected damage levels.

Real-time incidents such as structural failures, flooding and evacuations can be overlain on the mapping, and made available for other users of the assessment tool. Maps and damage reports can be printed or emailed, and exported to a variety of commonly used formats.

Key aspects of the software include:

- Real-time impact forecasting
- Customizable GIS with integrated TAOST™ storm modeling
- Ability to incorporate loss estimation
- Operational with or without network access
- Low operation & maintenance costs
- Intuitive mapping interface for non-specialist users

EMMA
Emergency Mapping Management
& Analysis



CAYMAN LAND INFO

P.O. Box 1089
Grand Cayman, KY1-1102
Cayman Islands
Phone: 1-345-244-3420
Fax: 1-345-949-2187
www.caymanlandinfo.ky

KINETIC
ANALYSIS
CORPORATION